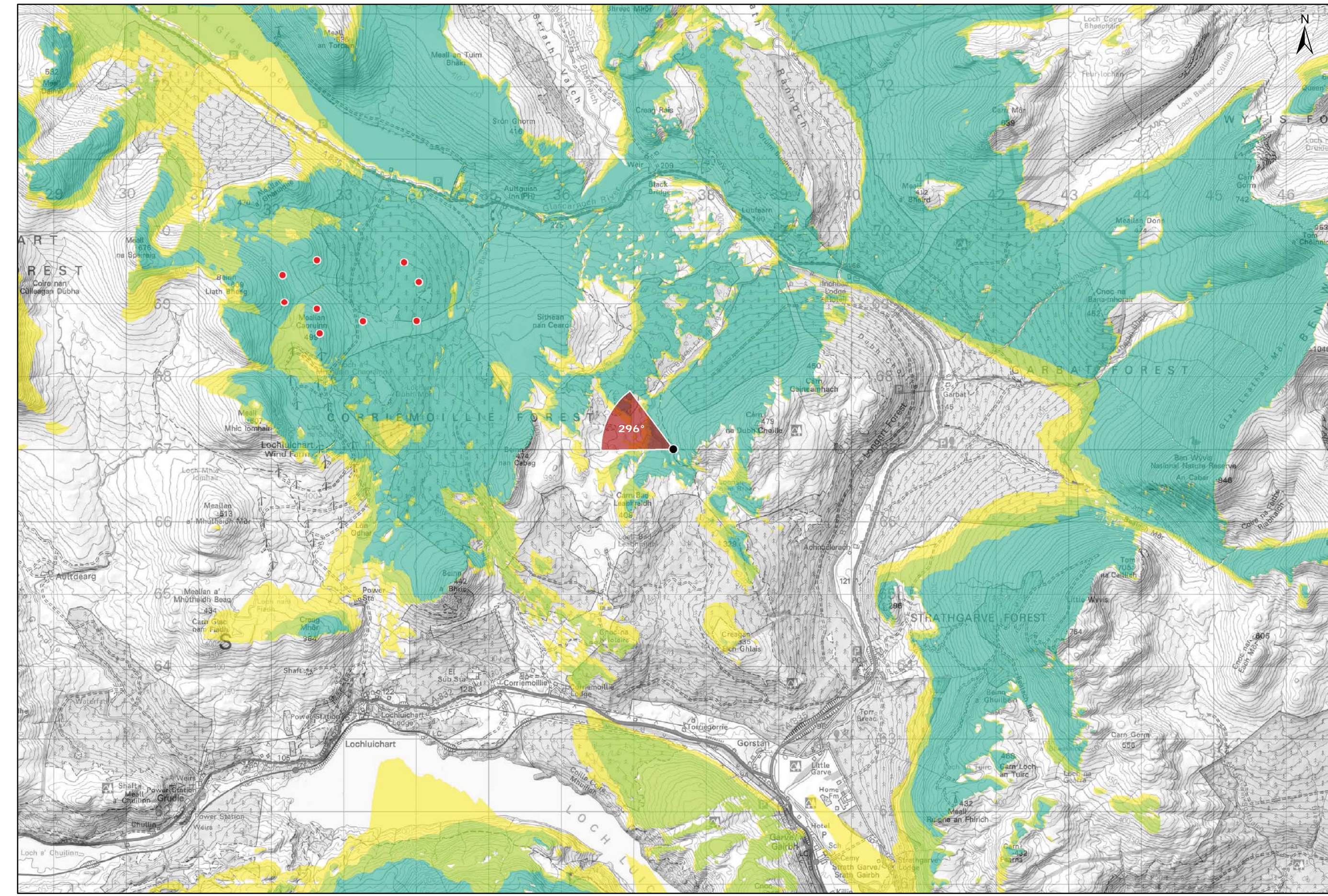


Viewpoint Location Plan Baseline Panorama  
Scale: 1:150,000



Viewpoint Location Plan  
Scale: 1:50,000 (Blade Tip ZTV)

**Note:**  
 1. ZTV: Created using ESRI ArcGIS 10.5 software using the following data and parameters:  
 Blade tip height: 133m  
 DTM Data: OS Terrain 5 DTM. Resampled to a 10m grid.  
 Observer height: 2m  
 No surface features, such as buildings or trees, were included in the analysis.  
 Earth curvature and light refraction has been included in calculations.

- Legend:**
- Proposed Turbines
  - Viewpoint Location
  - 90° Field of View Viewpoint
  - 53.5° Field of View Viewpoint

- Cumulative Wind Turbines
- Wind Farm Status (01/10/2018)**
- Wind Farm Status (01/10/2018)

- Wind Farm Status (01/10/2018)**
- Scoping
  - Operational; Under Construction

- Zone of Theoretical Visibility**
- No. of Turbines (133m) Visible**
- 1 - 3
  - 4 - 6
  - 7 - 9

Blade Tip:	133m
DTM:	OS T5
DTM resolution:	5m
Observer height:	2m
Surface features:	Excluded
Earth curvature:	Included

**Title:** Figure 9.24a  
Viewpoint 4: Old Drivers Route, Corrieomolle

**Lochluichart Wind Farm Extension II**

**Source:**  
© Crown copyright and database rights (2018)  
OS (license No 0100031673)

**Client:** Infinergy

**Drawn by:** MJF **Checked:** JW

**Date:** 15/10/2018 **Figure:** 9.24a

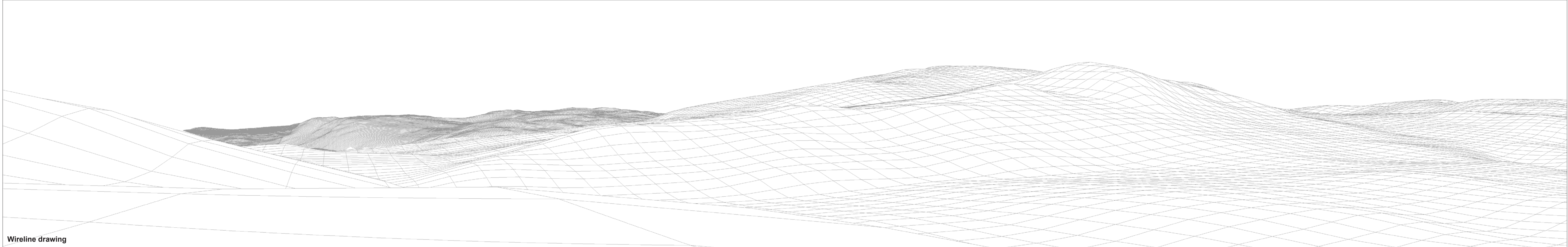
**Scale:** **Revision No.:** B





Baseline photograph

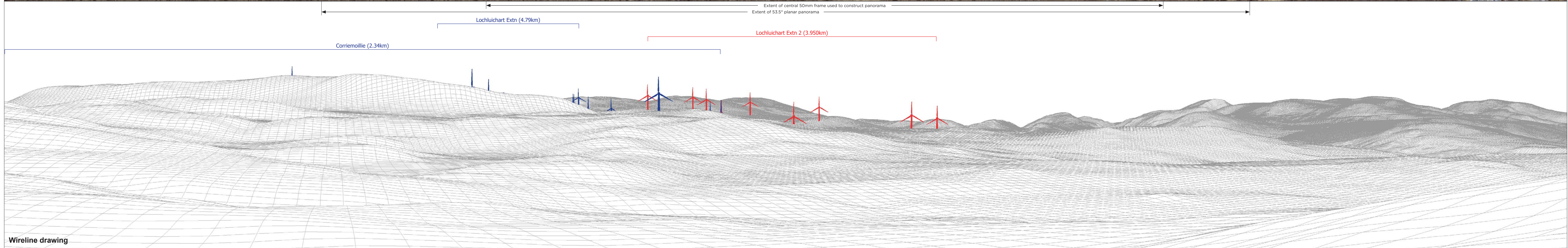
This image provides landscape and visual context only



Wireline drawing

<b>OS reference:</b> 237546 E 867006 N	<b>Horizontal field of view:</b> 90° (cylindrical projection)	<b>Camera:</b> Canon EOS 6D
<b>Eye level:</b> 334.66 m AOD	<b>Principal distance:</b> 522 mm	<b>Lens:</b> 50mm (Canon EF 50mm f/1.4)
<b>Direction of view:</b> 206°		<b>Camera height:</b> 1.5 m AGL
<b>Nearest turbine:</b> 3.950 km		<b>Date and time:</b> 04/05/17, 12:23

**Figure: 9.24b**  
**Viewpoint 4: Old Drovers Route, Corriemoillie**

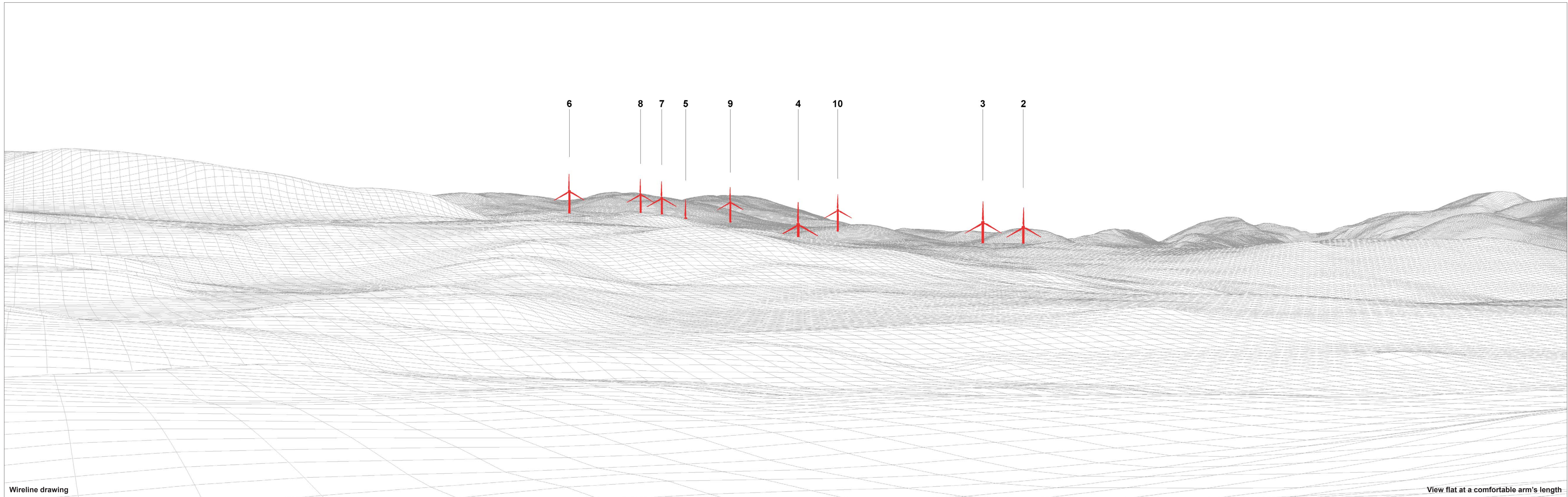


OS reference: 237546 E 867006 N  
 Eye level: 334.66 m AOD  
 Direction of view: 296°  
 Nearest turbine: 3.950 km

Horizontal field of view: 90° (cylindrical projection)  
 Principal distance: 522 mm

Camera: Canon EOS 6D  
 Lens: 50mm (Canon EF 50mm f/1.4)  
 Camera height: 1.5 m AGL  
 Date and time: 04/05/17, 12:23

Figure: 9.24c  
 Viewpoint 4: Old Drovers Route, Corriemoillie



Wireline drawing

View flat at a comfortable arm's length

OS reference: 237546 E 867006 N  
Eye level: 334.66 m AOD  
Direction of view: 296°  
Nearest turbine: 3.950 km

Horizontal field of view: 53.5° (planar projection)  
Principal distance: 812.5 mm  
Paper size: 841 x 297 mm (half A1)  
Correct printed image size: 820 x 260 mm

Camera: Canon EOS 6D  
Lens: 50mm (Canon EF 50mm f/1.4)  
Camera height: 1.5 m AGL  
Date and time: 04/05/17, 12:23

Figure: 9.24d  
Viewpoint 4: Old Drovers Route, Corriemoillie



Photomontage

View flat at a comfortable arm's length

**OS reference:** 237546 E 867006 N  
**Eye level:** 334.66 m AOD  
**Direction of view:** 296°  
**Nearest turbine:** 3.950 km

**Horizontal field of view:** 53.5° (planar projection)  
**Principal distance:** 812.5 mm  
**Paper size:** 841 x 297 mm (half A1)  
**Correct printed image size:** 820 x 260 mm

**Camera:** Canon EOS 6D  
**Lens:** 50mm (Canon EF 50mm f/1.4)  
**Camera height:** 1.5 m AGL  
**Date and time:** 04/05/17, 12:23

**Figure: 9.24e**  
**Viewpoint 4: Old Drovers Route, Corriemoillie**